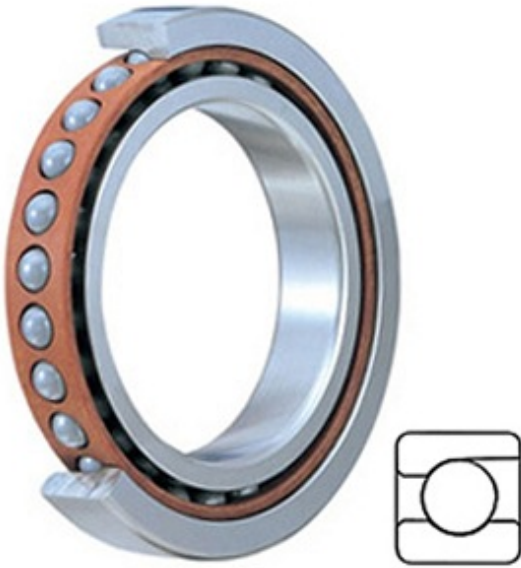




BEARING-MALAYSIA SDN.BHD.



7205CP4 Bearing 2D drawings and 3D CAD models

0.984 Inch | 25 Millimeter x 2.047 Inch | 52
Millimeter x 0.591 Inch | 15 Millimeter NTN
7205CP4 Precision Ball Bearings

Bearing No. 7205CP4

Category	Precision Ball Bearings
Inventory	0.0
Manufacturer Name	NTN
Minimum Buy Quantity	N/A
Weight	0.121
EAN	4547359438833
Product Group	B04270
Enclosure	Open
Precision Class	ABEC 7 ISO P4
Material - Ball	Steel
Number of Bearings	1 (Single)
Contact Angle	15 Degree
Preload	None
Raceway Style	1 Rib Outer Ring
Cage Material	Nylon
Rolling Element	Ball Bearing
Flush Ground	No
Inch - Metric	Metric
Other Features	Single Row Angular Contact
Long Description	25MM Bore; 52MM Outside Diameter; 15MM Width; Open Enclosure; ABEC 7 ISO P4 Precision; Steel Ball Material; 1 (Single) Bearings; 15 Degree Contact Angle; Nylon Cage



BEARING-MALAYSIA SDN.BHD.

	Material; 1 Rib Outer Ring Racewa
Category	Precision Ball Bearings
UNSPSC	31171531
Harmonized Tariff Code	8482.10.50.28
Noun	Bearing
Keyword String	Angular Contact Ball
Manufacturer URL	http://www.ntnamerica.com
Manufacturer Item Number	7205CP4
Weight / LBS	0.267
D	2.047 Inch 52 Millimeter
d	0.984 Inch 25 Millimeter
B	0.591 Inch 15 Millimeter
bore diameter:	25 mm
radial static load capacity:	10200 N
outside diameter:	52 mm
operating temperature range:	-40 to 120 ° C
overall width:	15 mm
cage material:	Nylon
contact angle:	15 °
maximum rpm:	29200 rpm
row type & fill slot:	Single-Row Non-Fill Slot
finish/coating:	Uncoated
bore type:	Round
precision rating:	ISO Class 4
closure type:	Open
fillet radius:	1 mm
snap ring included:	Without Snap Ring
weight:	0.121 kg
bearing material:	High Carbon Chrome Steel
manufacturer product page:	Click here



BEARING-MALAYSIA SDN.BHD.

radial dynamic load capacity:	16600 N
----------------------------------	---------